

We wanted a system that would help us get ahead, not catch up. Acumatica gave us the visibility we needed to grow with confidence.

— Tamara Sheppard,
Co-Founder, Sheppard Mining Contracting

CASE STUDY: GROWING STRONGER THROUGH SYSTEMS INTEGRATION AND SCALABILITY

Sheppard Mining Contracting, a dynamic civil construction and mining services company based in Kalgoorlie, proactively upgraded its systems to support its multi-division structure and fast-paced growth. By partnering with AlphaBiz Solutions to implement MYOB Acumatica, and extending functionality through integrated tools like TOKEN, the business unified its operations under one platform.

This empowered the team with real-time project visibility, accurate profitability tracking, and streamlined compliance. With consistent support and strong internal leadership, Sheppard Mining now operates with greater precision, agility, and confidence—well-positioned to scale and capitalise on future opportunities.

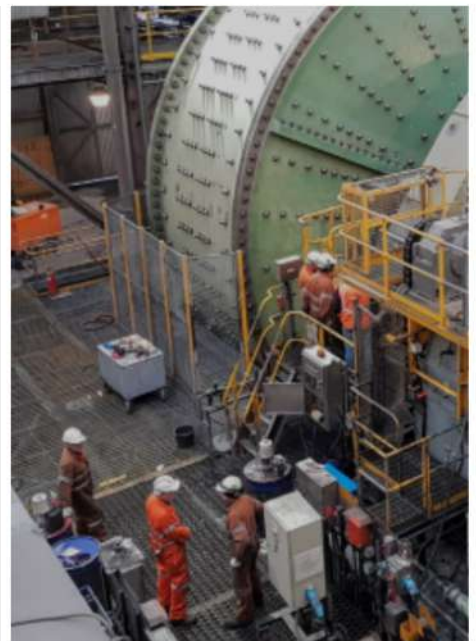


YEAR: 2024
VALUE LEVER: Scalability, Real-time Visibility, Single Source of Truth
LOCATION: Kalgoorlie, WA
PRODUCT: MYOB Acumatica
APPLICATION: Project Management, Divisional Profitability, Workforce Efficiency

ISSUES FACED

As Sheppard Mining Contracting expanded into multiple divisions, their original systems could no longer keep up. Using disconnected tools for project and financial management, the team struggled with reporting inconsistencies, delays in reconciliation, and visibility gaps.

The business lacked the ability to report by division or project, and inefficiencies from using multiple platforms created unnecessary write-offs. Planning for rapid growth, leadership identified the need for a system that could deliver real-time insights and help proactively manage profitability across different service areas.



SOLUTION:

AlphaBiz Solutions deployed MYOB Acumatica tailored to Sheppard Mining's multi-divisional structure and operational needs. Real-time reporting and project-level profitability tracking replaced disconnected systems, enabling weekly and monthly reviews to guide proactive decisions.

To support remote and field-based teams, TOKEN was integrated to streamline timesheet and materials entry from the field. This helped unify operations without manual processes, improving efficiency and compliance across the business.

AlphaBiz provided dedicated implementation support through a trusted consultant, ensuring consistent communication, ongoing training, and minimal disruption. The project was delivered in phases, with close collaboration at every stage.



One Source
of Truth

myob
Acumatica

Reporting:

Project and divisional insights
delivered weekly

Mobile Operations:

Integrated field timesheet and
equipment tracking via TOKEN

Implementation Support:

Dedicated consultant and phased
rollout



RESULTS:

About the outcomes:

Sheppard Mining Contracting now operates with one unified system, eliminating reconciliation issues and enabling real-time visibility across projects and divisions. With centralised data, the business can now track KPIs, support strategic planning, and empower teams with timely in-

Concrete results:

- Streamlined reporting has enabled faster management decisions
- Managers now track KPIs with real-time data, boosting accountability
- Time, materials, and soon equipment entry is captured remotely from field teams
- Compliance and STP reporting is more manageable and accurate

Behavioural Results:

The system empowered team leaders to set clear KPIs, run performance reviews, and improve cross-team visibility. Operational confidence has improved as users become more familiar with the system, creating room to explore advanced features like CRM, fleet tracking, and automation.

Applicability to Other Clients:

Businesses in mining and construction with growing divisions or project-based teams can benefit from unified ERP platforms like MYOB Acumatica. AlphaBiz's experience in regional implementation and strong support model ensures even complex operations can transition with minimal disruption.